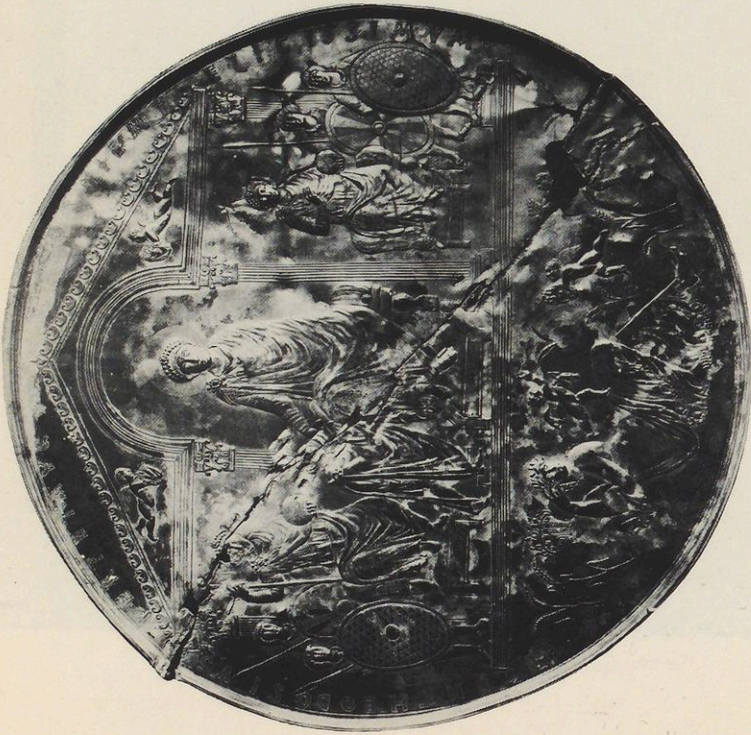
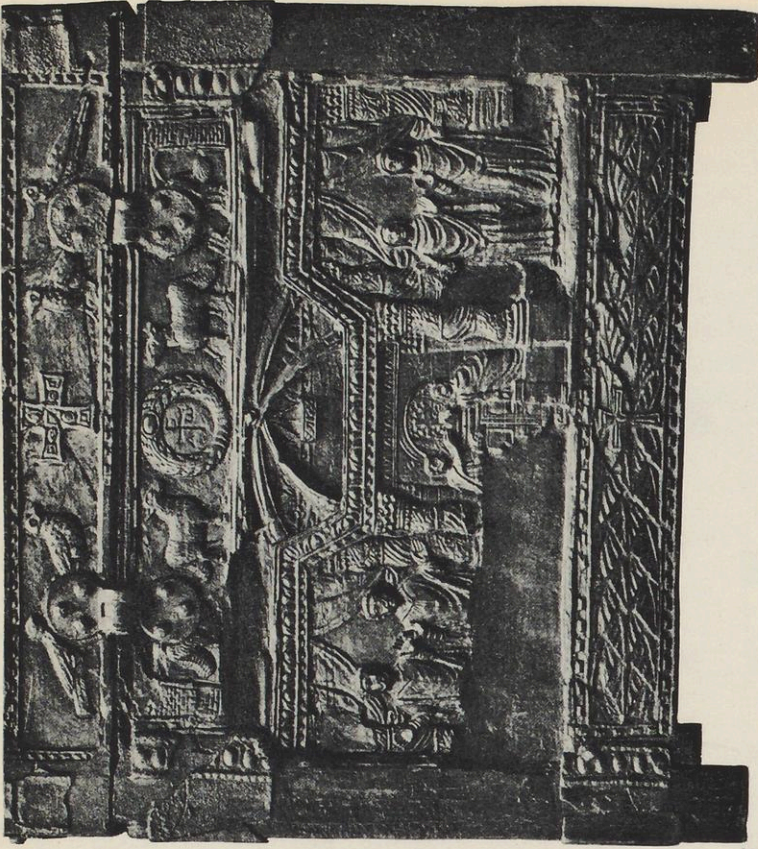


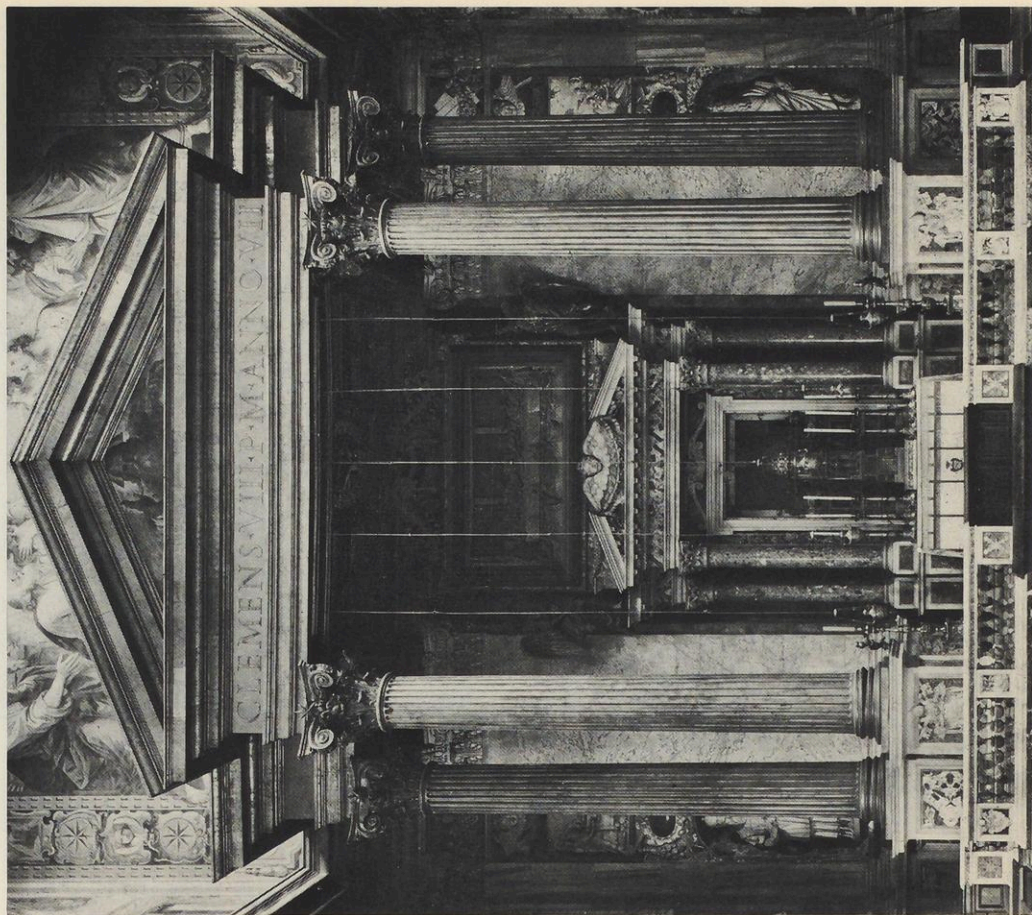
Rom, Lateran-Basilika, Fastigium Konstantins, Rekonstruktion
(Ursula Nilgen; Zeichnung Dipl.-Archit. Gerd-Wilhelm Bergmann)



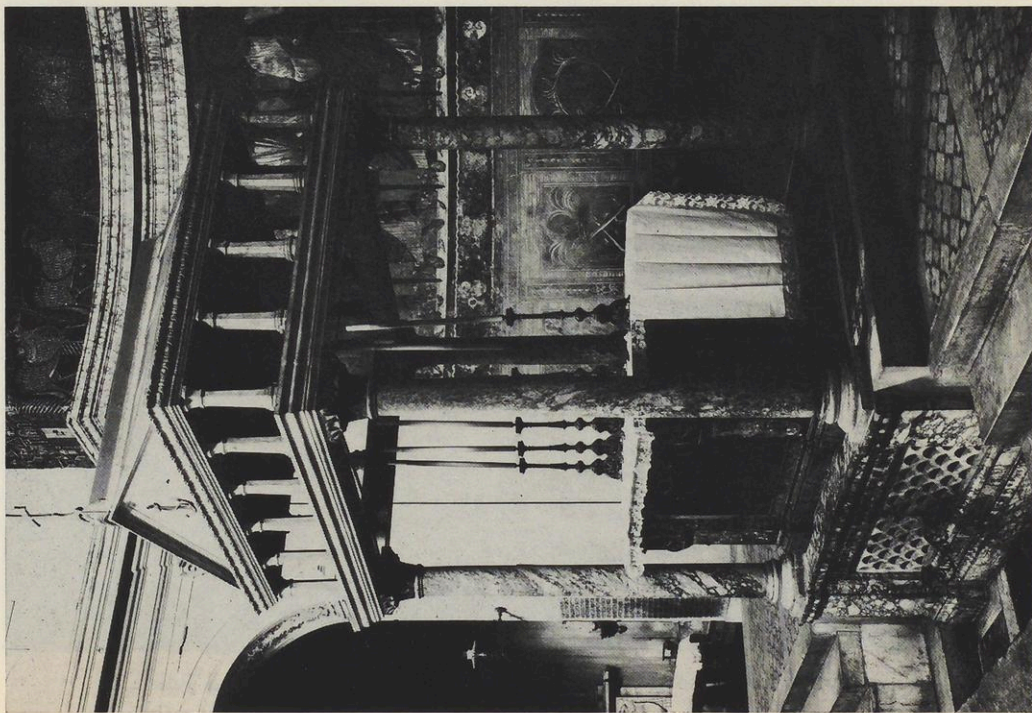
a) Madrid, Missorium Theodosius' I.



b) Venedig, Elfenbeinkästchen von Samagher/Pola, Rückseite



b) Rom, S. Giovanni in Laterano, Sakramentsaltar



a) Rom, S. Clemente, Altarborium



a) Florenz, Ognissanti, Fresko im 1. Kreuzgang, Detail



b) Ravenna, Museo Arcivescovile, sog. Reliquiar der Heiligen Quiricus und Julitta.
Foto: Diemer