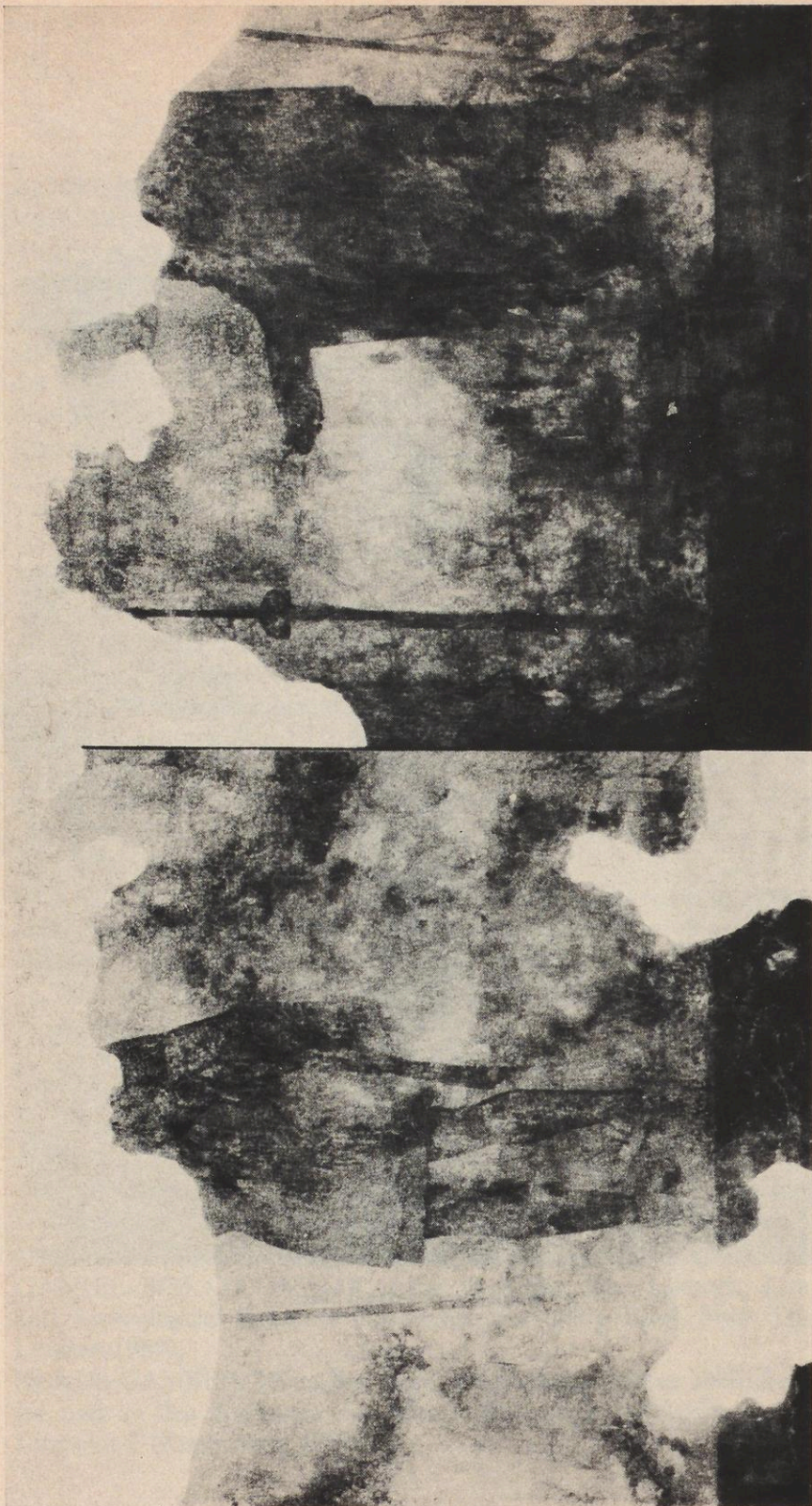
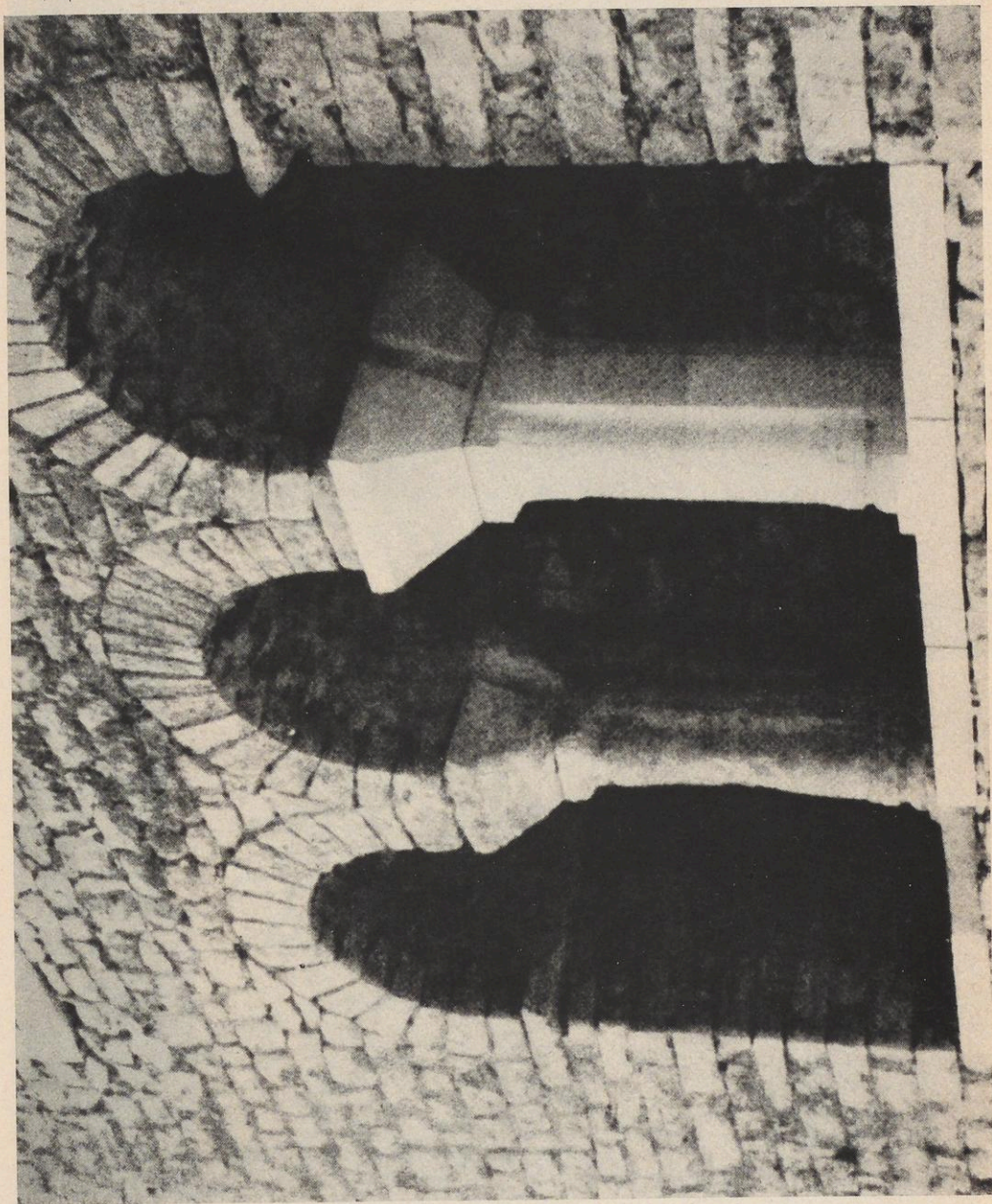
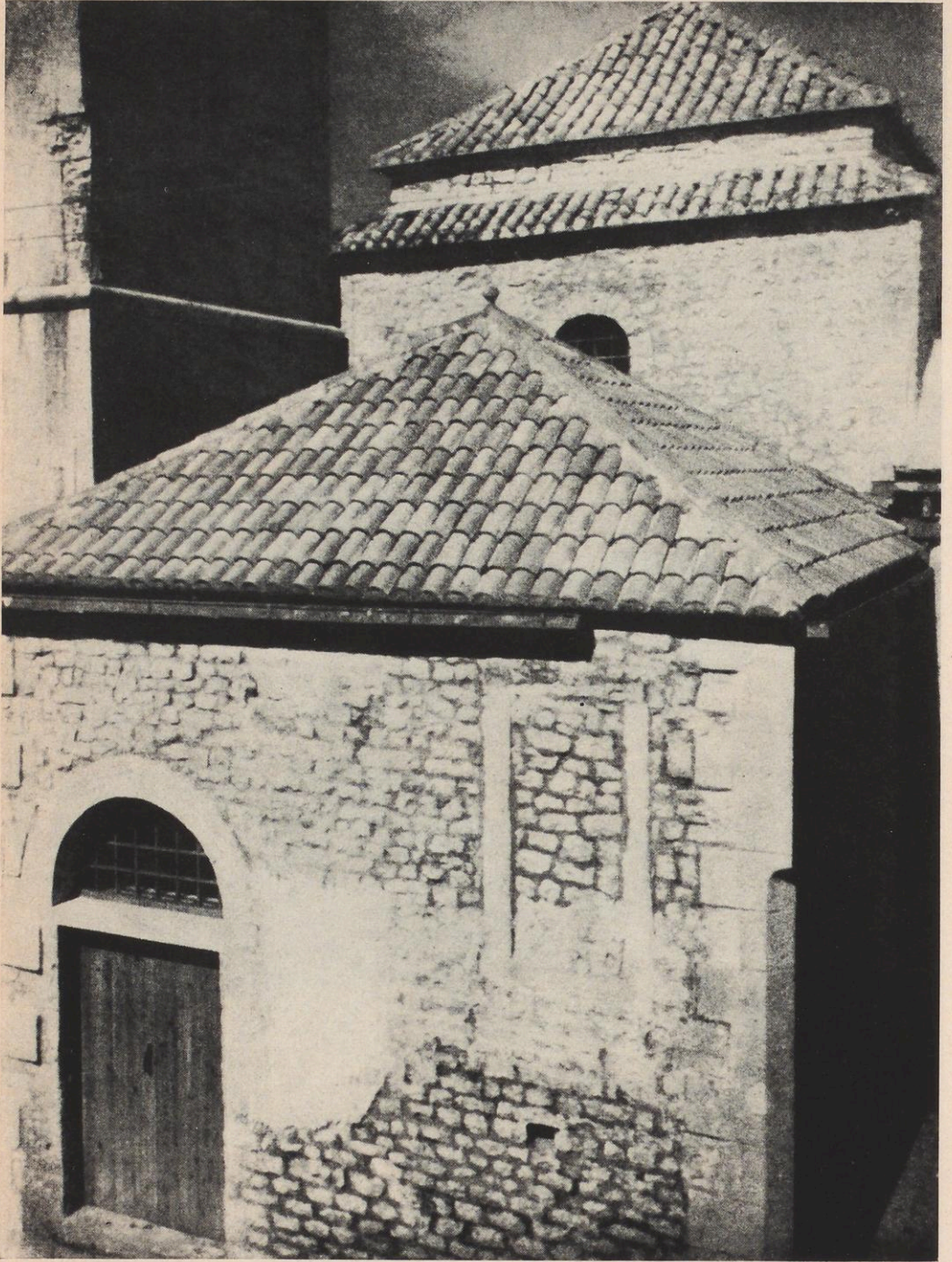


Wanddekoration des 2. Stiles

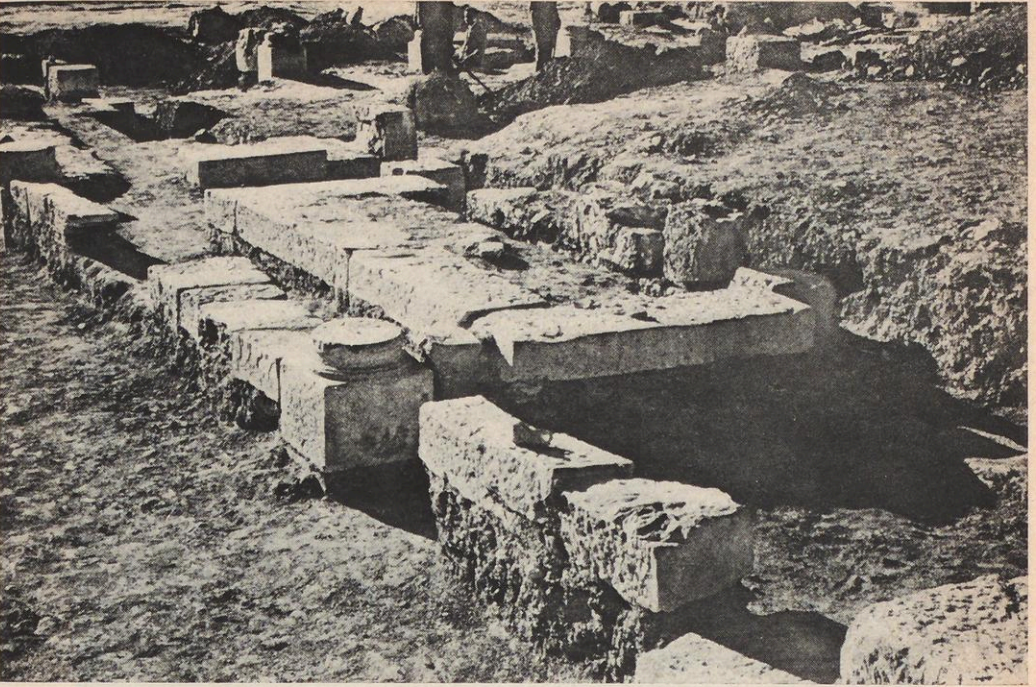


Reste eines Kriegers und einer Frau

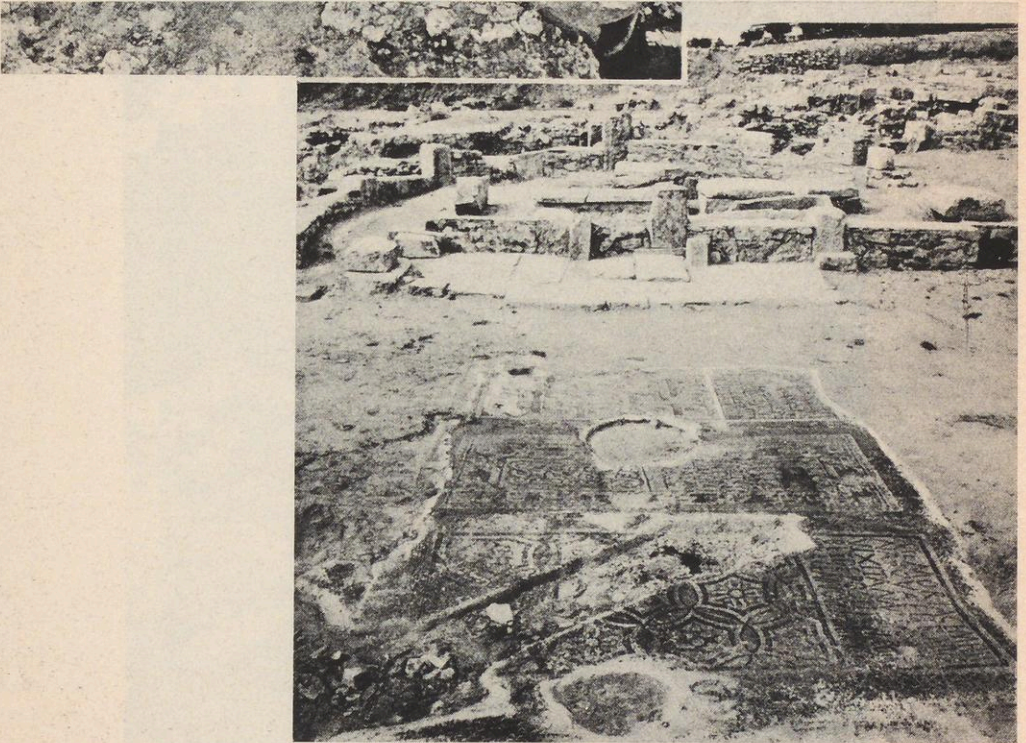




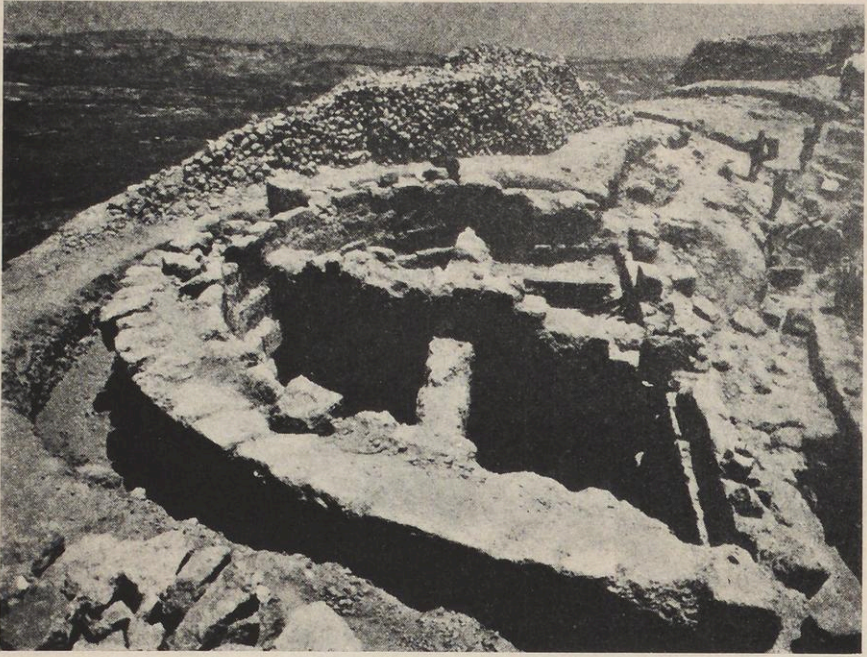
Baptisterium. Außenansicht



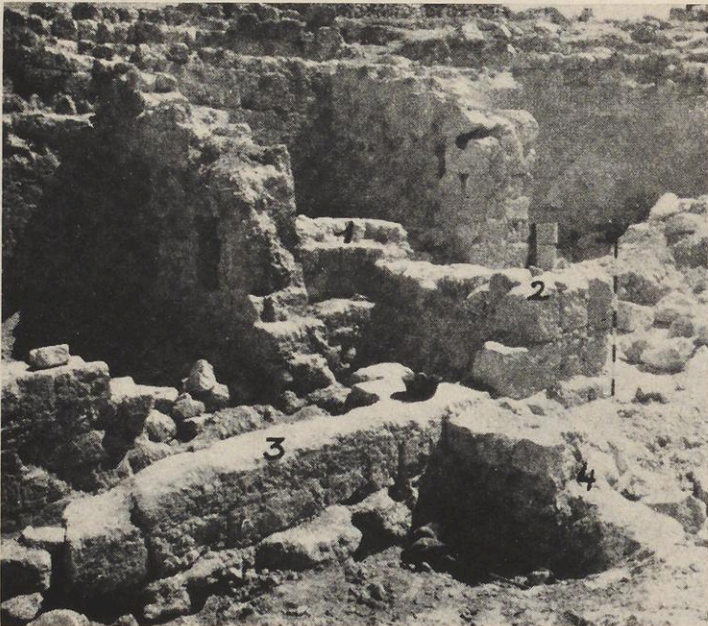
a) Basilika B. Fassade mit Treppe



b) Basilika B. Mittelschiff mit Apsis



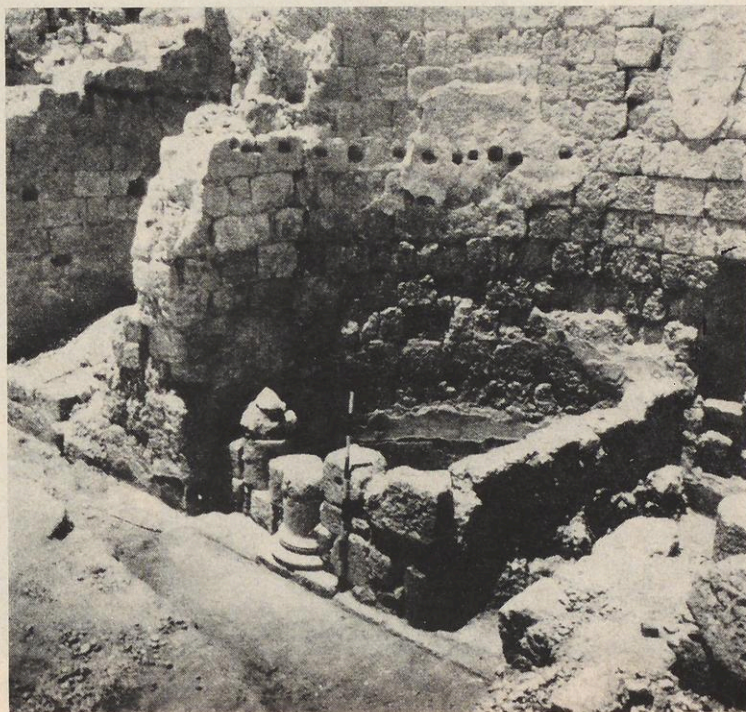
a) Nordturm der Festungsanlage



b) Eingebaute Mönchszellen



a) Exedra mit Säulenstellungen



b) Exedra mit eingebauten Mönchszellen



Hyogäum Lardia.
Grabkammer,
Inneres