

Fig. 1.

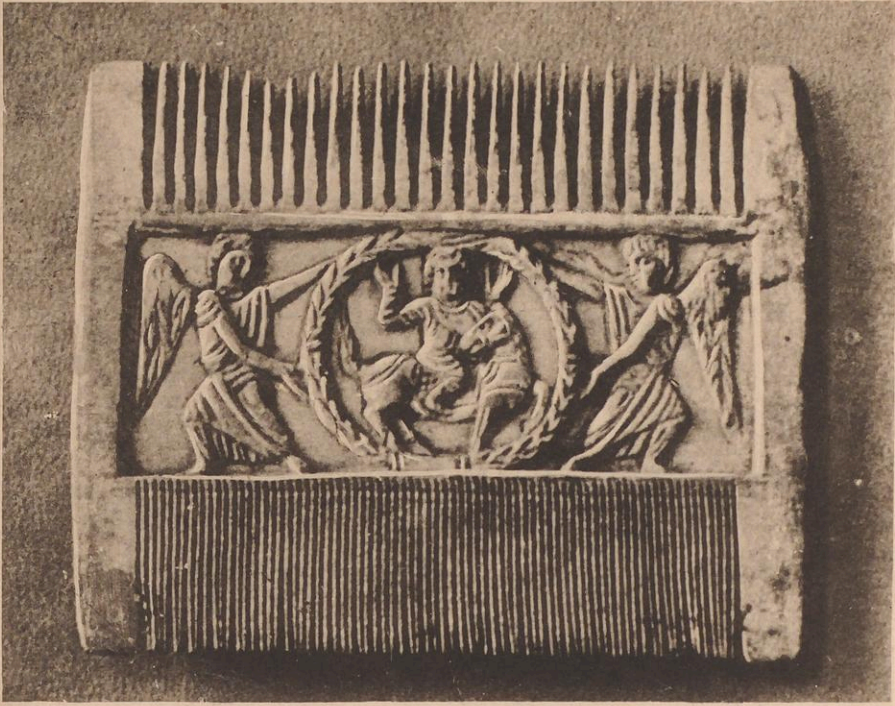


Fig. 2.



ROMA FOT. DANESI

KAIRO (GIZEH), MUSEUM:
Elfenbein-Kamm aus Antinoë.

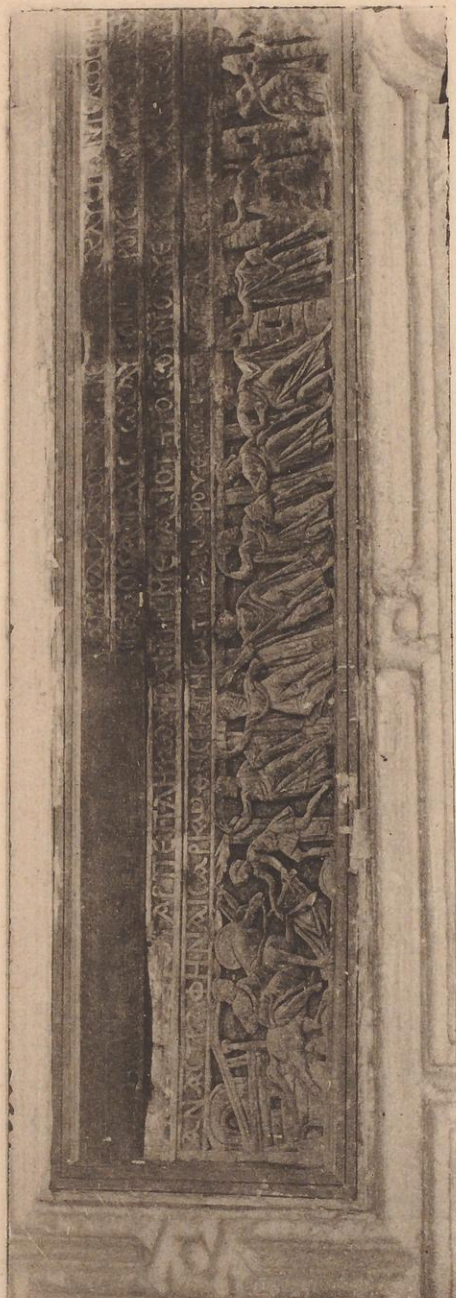


Fig. 1.

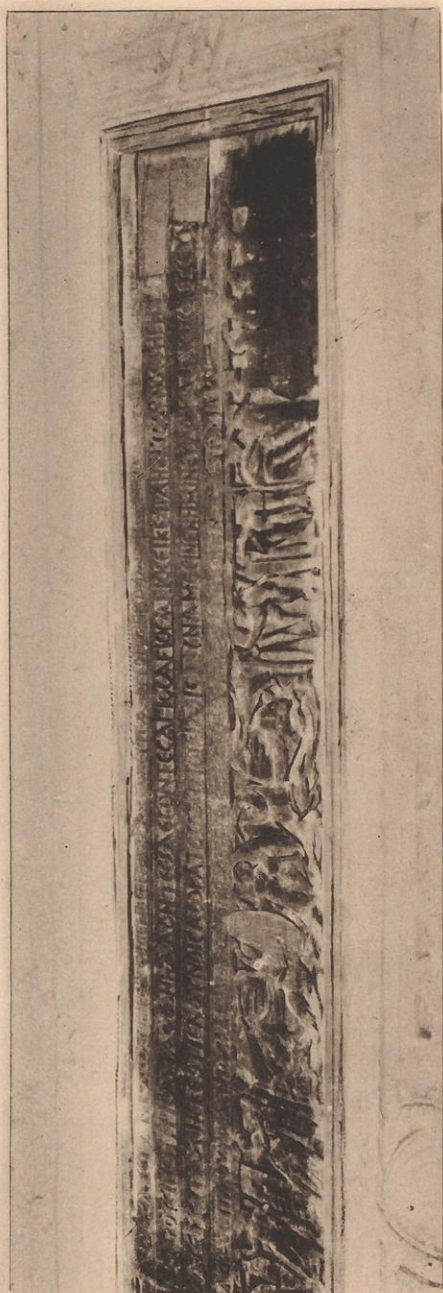
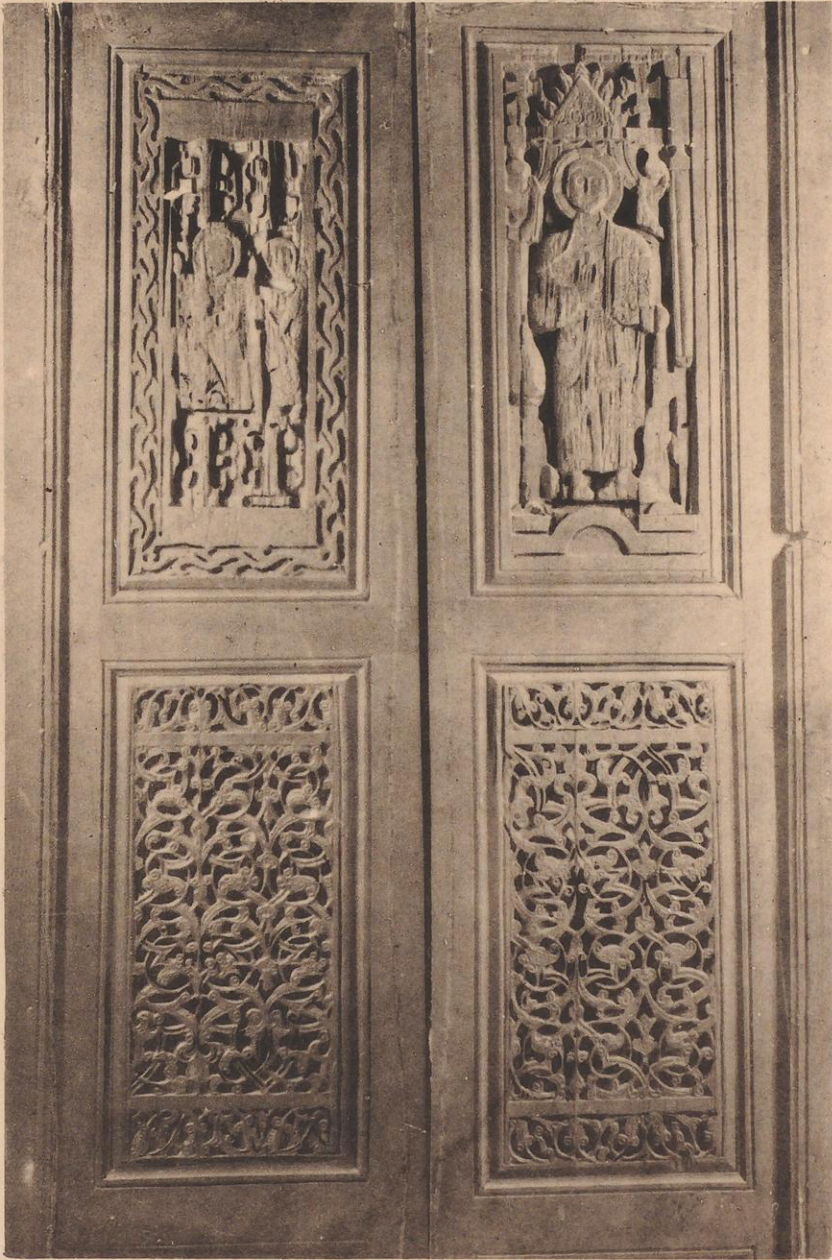


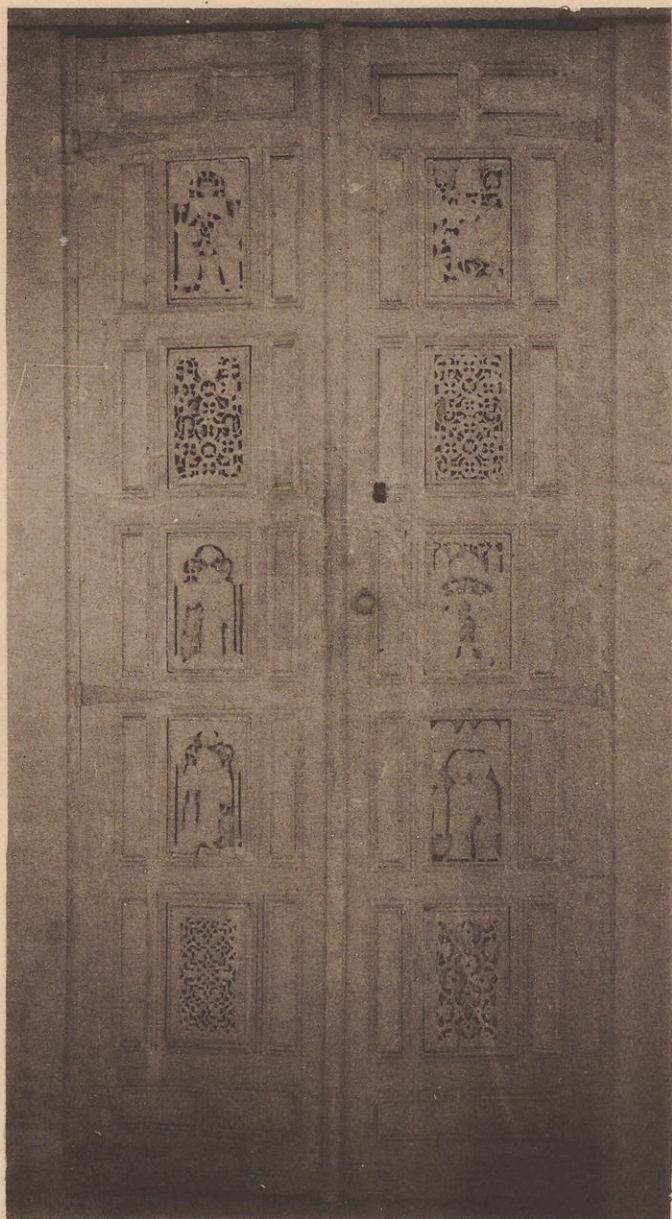
Fig. 2.

KAIRO, KASR ES- SAMAA:
Holzrelief über dem Eingang von al- Mu'allaka.



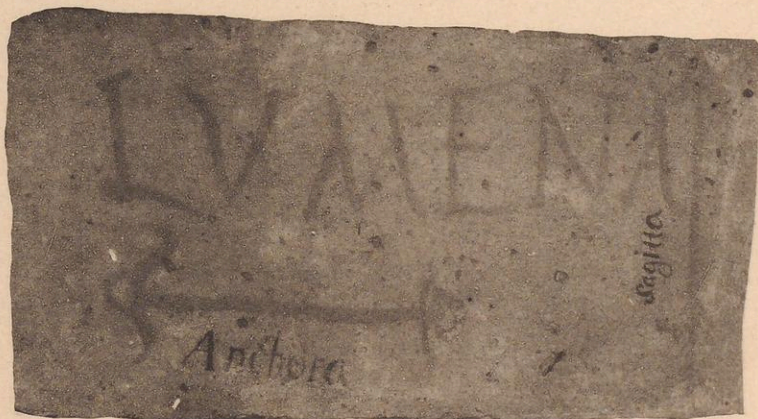
ROMA FOT. DANESI

KAIRO, KASR ES-SAMAA:
Holzreliefs am Haikal von al- Mu'allaka.



ROMA FOT. DANESI

KAIRO, KASR ES- SAMAA:
Holzthür der Georgskirche.



ORSI, Katakomben in Steilien.

