



ΚΑΛΟΚΕΡΩΜΑΚΕΔΟ
 ΝΙΚΕΣΩΓΓΕΝΙΑΤΟΙΣ
 ΠΑΥΚΥΤΑΤΟΙΣΓΟΝΕΥ
 ΣΙΝΤΟΚΟΙΜΦΡΙΝΕΩΣ
 ΑΝΑΣΤΑΣΕΩΣ

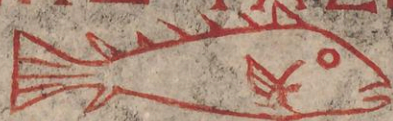


Fig. 1.

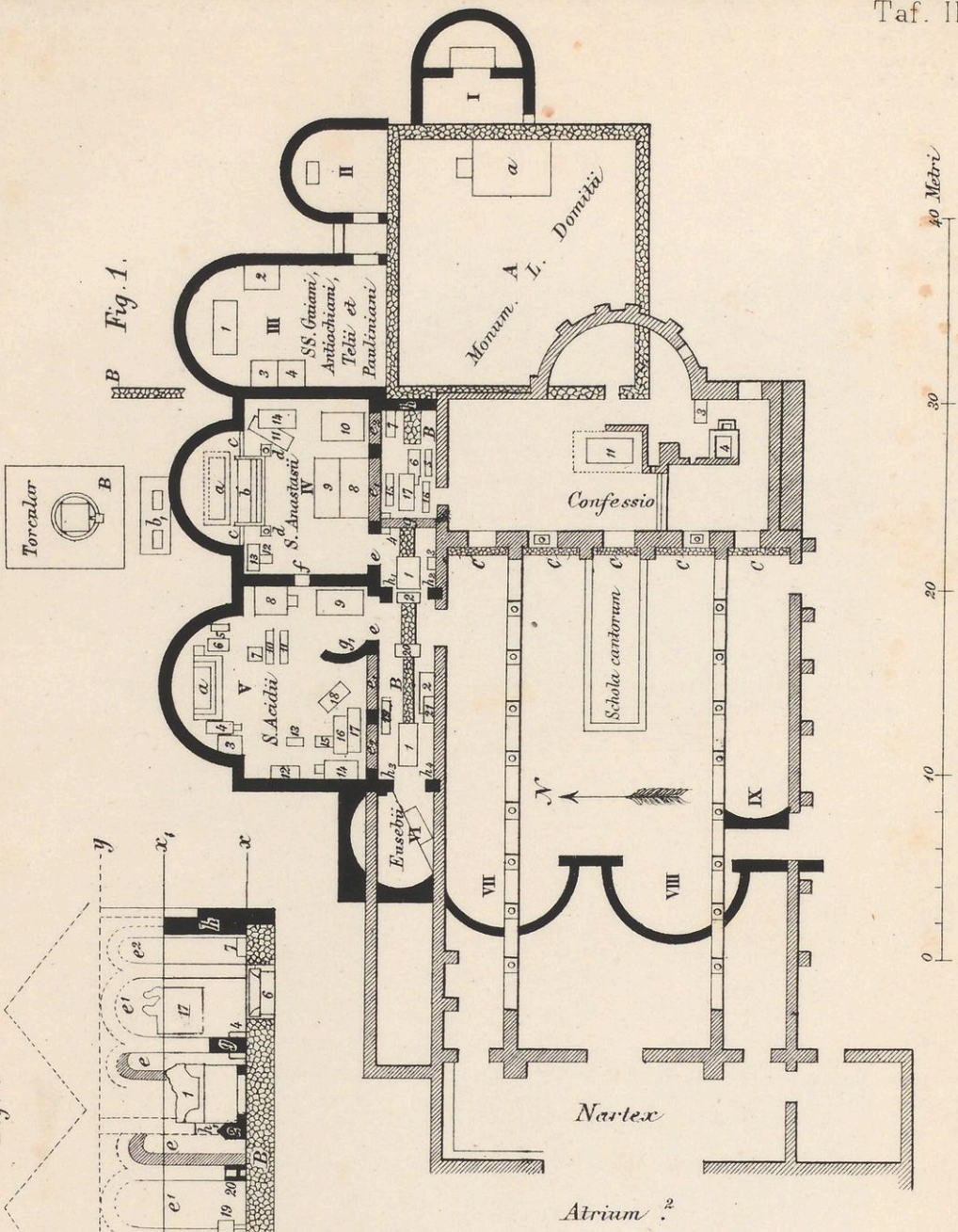


Fig. 2.

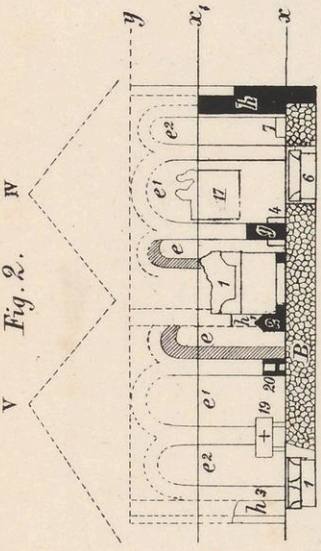


Fig. 3.

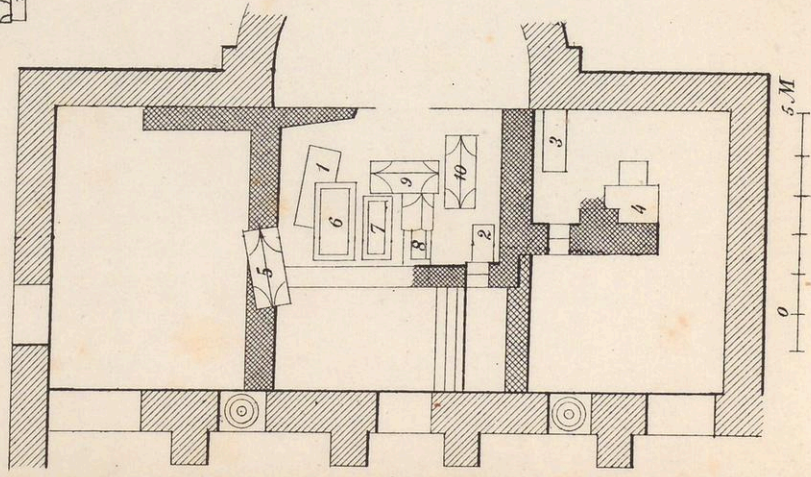


Fig. 1.



Fig. 2.

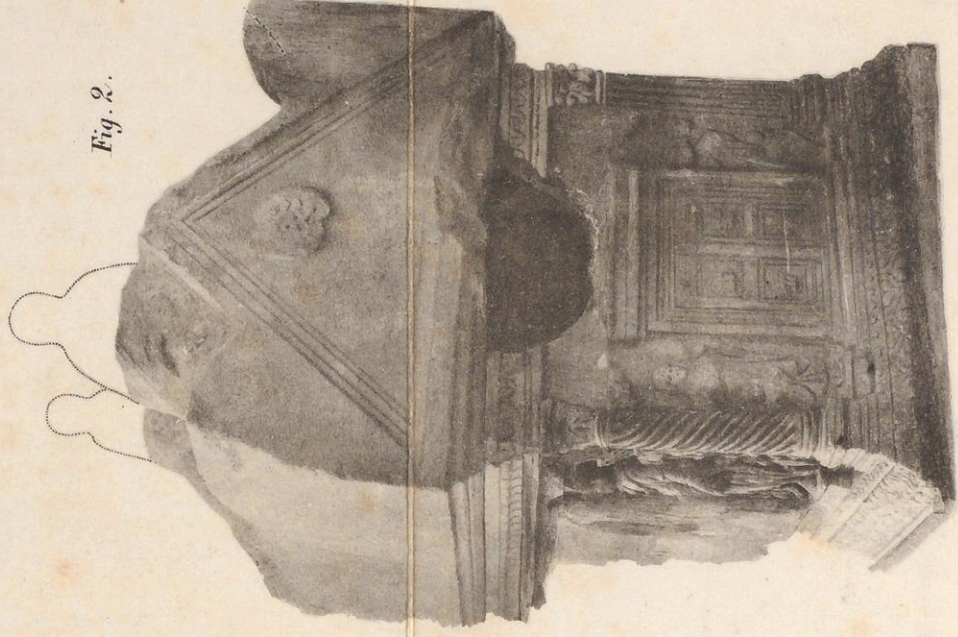
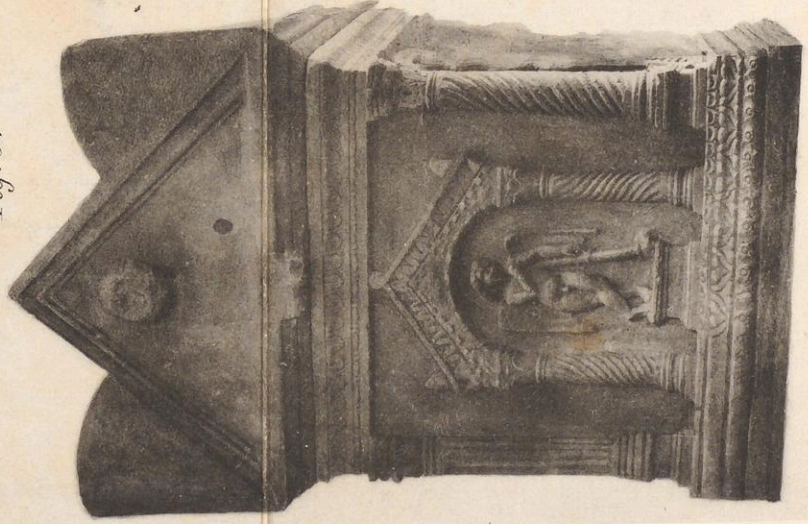


Fig. 3.



DEPOSITIO ASCLEPIAE
CF-DIE



OVAMVIS PATRONIAD TRIBVNALERVNTEICHRISTI
MARTYRES TVMVLQVORVM ORNAVIT FELIX

IDCIRCOVELAETAESPECTET FVTVRVMIVD

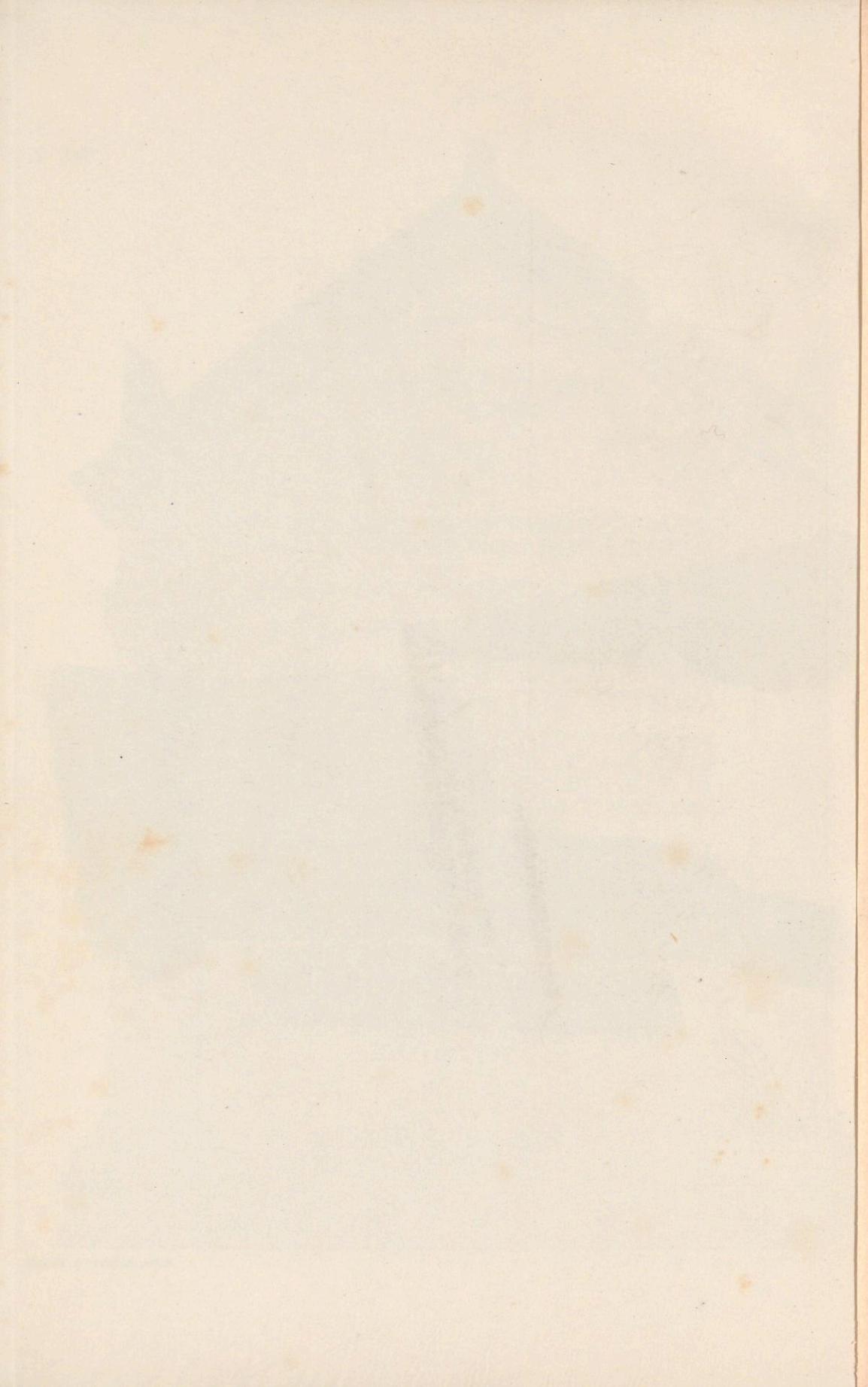
AVDEMVS TAMEN HAEC EFFARI CVM
GEMITV

EXIMIAQVIESCITASCLEPIAEFIDELISINIACE
CVIREQVIEMTRIBVATDEVSOMNI
POTENSREX

INTERBEATOSVTILLISITBENEPOSTOBITVM
ILLATVLITAVITAADVERSISINCOMMODAREBVS
ATQVEINFELICITESTFINEPEREMPTAQVQ
QVADRAGINTASEPTEMANNOSPOSTOVAMTRANS
EGIT

EVNESTOGRAVISHEVTRISTEPVERPERIO
NEQVIVIT MISERVMPARI VDEPROMERE FETV
HAVSTAQVINONDVMLVCEPER EMPTVSABIT
ADQVEITATVMGEMINASCIMINOCVMCORPORE
PRAECEPTV

LETVMFERALI TRANSTVLITHORAANIMAS
ATNOSMAERENTESCONIUXNATIOQVE
GENERQVE
CARMENCVM LACRIMISHOCTIBICON
SCRIBIMVS



1



2

SANCTI AVA NZINI IT

3

IO ANGELVS
 TOCCAFONDVS
 PINXIT
 DIE 18 IVNI
 1596
 ANT. BOSIVS
 FECIT.

4

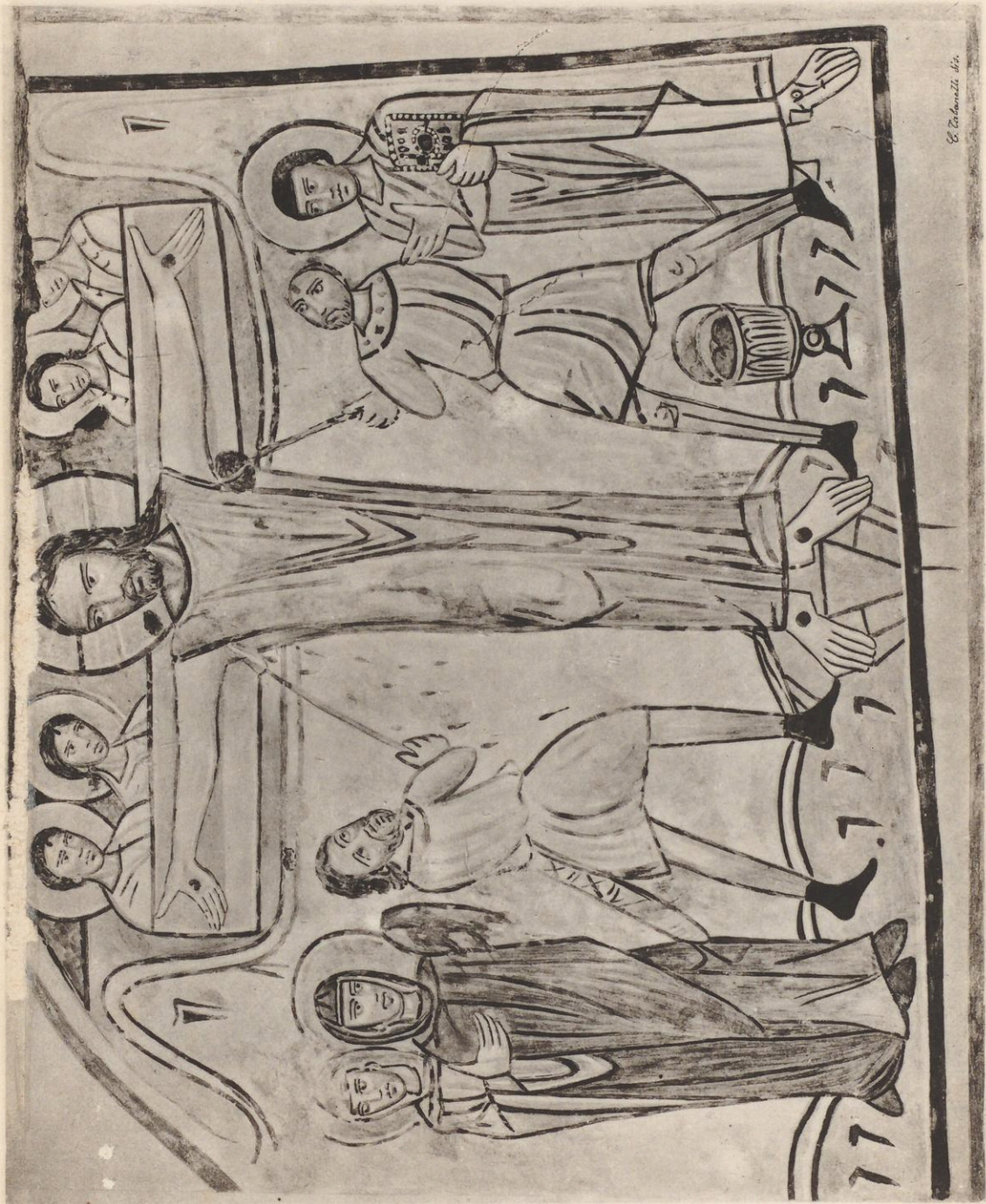
SANTI AVANN
 ZIND
 UTTA COTR PICO
 - 1632 -

5

SANTU
 PUT
 SENESE

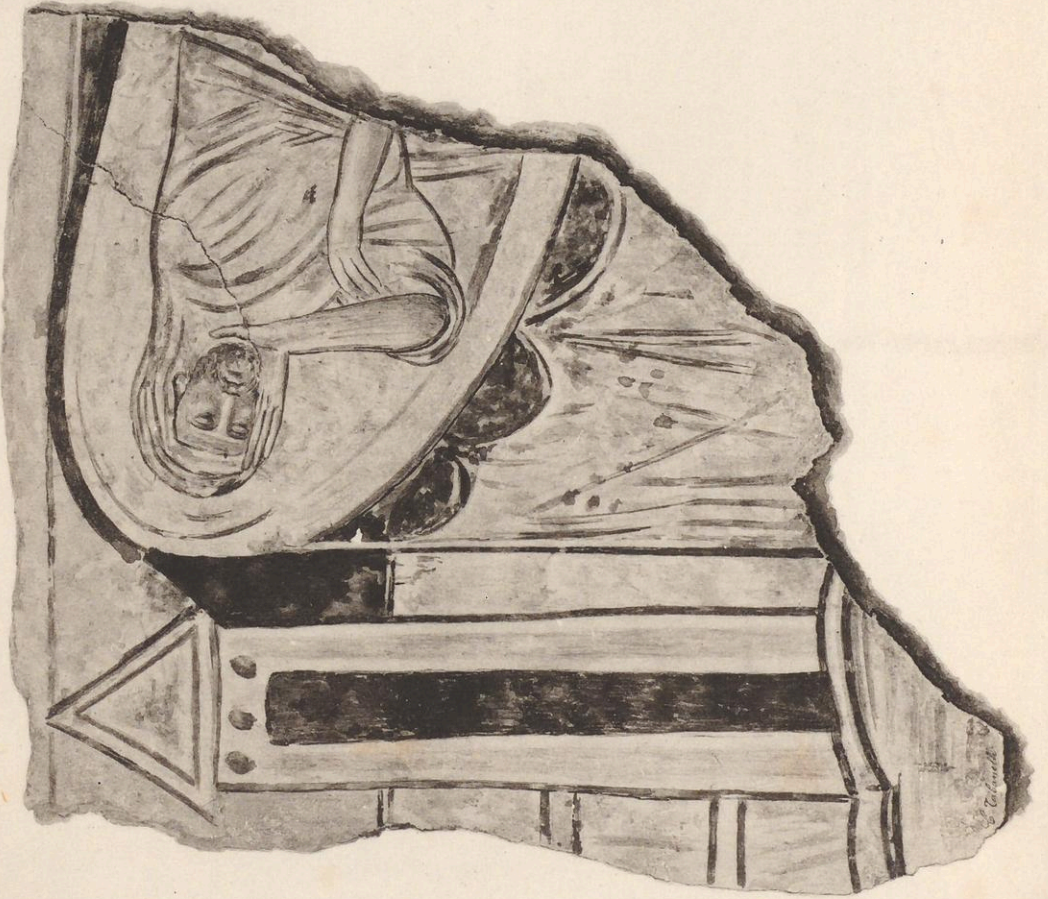
6

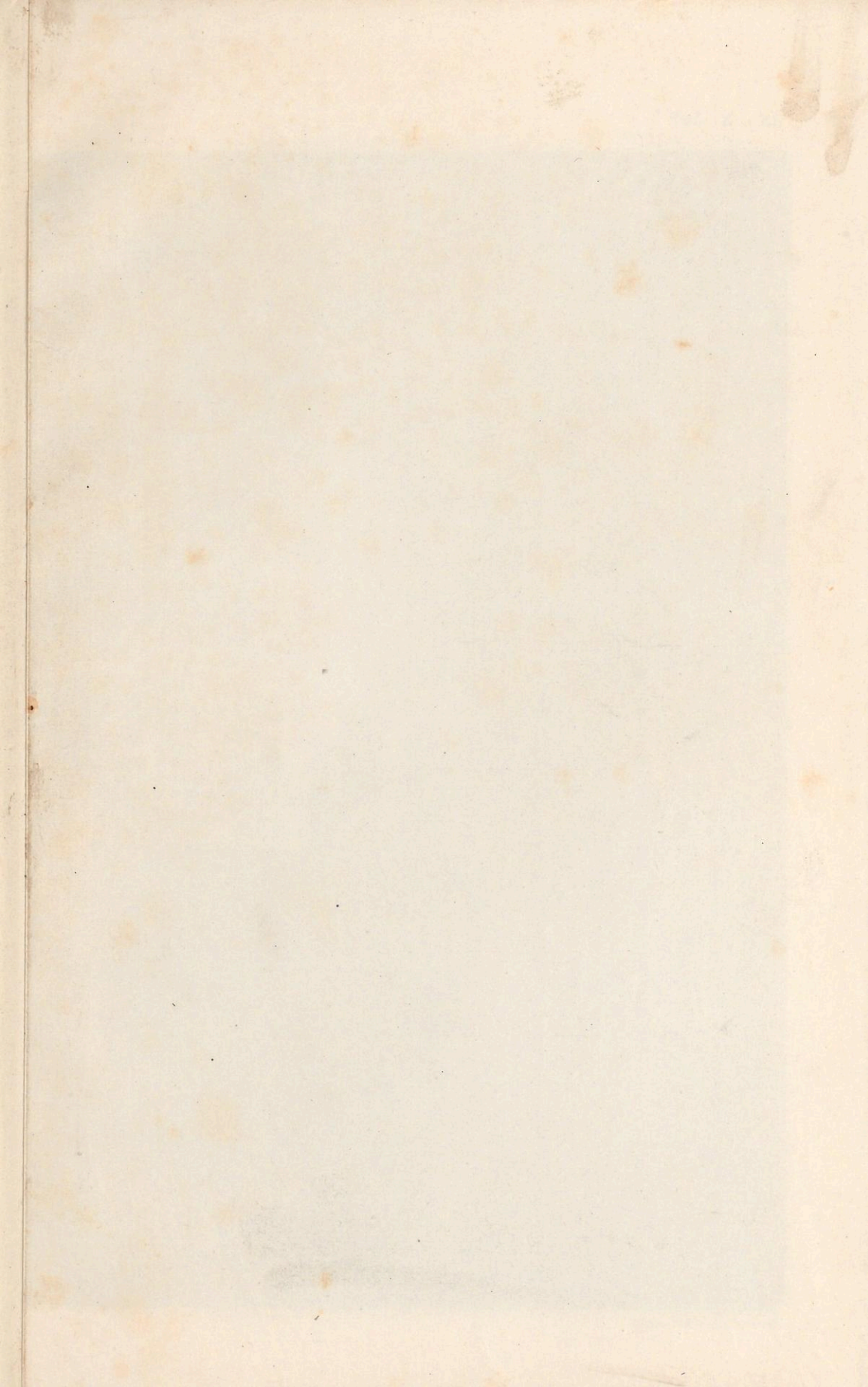
SANCTI AVA
 SE. ESE P
 1602



E. Cichonitzki del.











2.



3.

